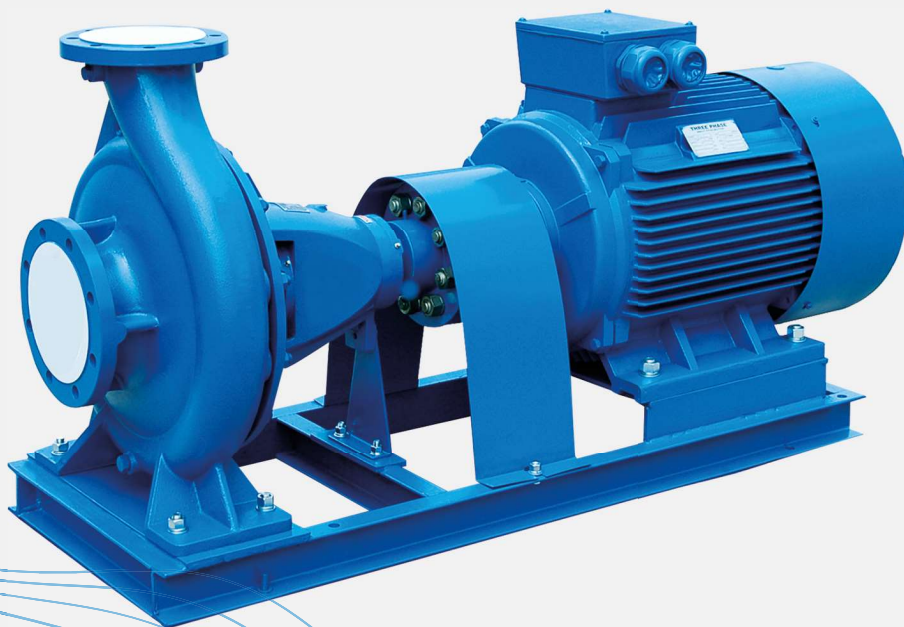


EA Series

End Suction Centrifugal Pumps 50/60Hz

PRODUCT CATALOGUE



PRODUCT OVERVIEW

Sturdy & Durable

Product Description

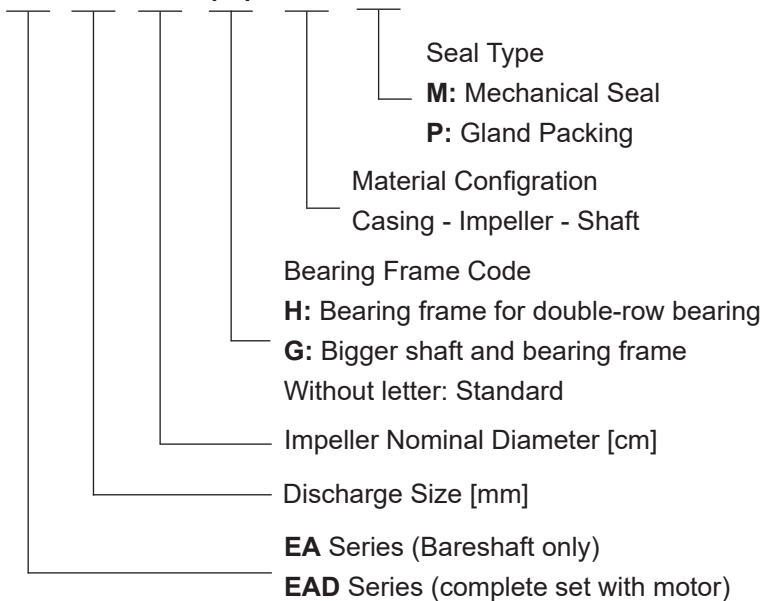
EA is end suction, single-stage, centrifugal pump designed in compliance with BS EN733 / DIN24255 standards. These pumps have a great advantages in interchangeable parts, high quality, long service life, easy maintenance and can be used in different applications in plants, mines, city water supply, fire-fighting systems, air-condition systems and irrigation.



EAD

Model Description

EA 80 32 (G) XXX X



EA



EA

Applications

- Water supply and drainage
- HVAC and Cooling Tower
- Marine - Ballasting & Bilge
- Booster and Pressurization Set
- Irrigation and agriculture
- Food and chemical industry (with stainless steel material)

Material Code

C: Cast Iron - Q: Ductile Iron - B: Brass
S: ASTM 420 - 45: ASTM 1045
S304: ASTM 304 - S316: ASTM 316

PRODUCT OVERVIEW

Efficient & Reliable

Design & Structure

Design	Performance and dimensions referring to the European standard BS EN733 / DIN24255
Structure	Horizontal, Axial End-Suction, Single-Stage, Single-Suction, Volute Casing, Back pull-out
DN [mm]	Outlet 32-300
Flange	ISO7005.2, DIN2501 PN16, GB /T17241.6 PN1.6 (ANSI, JIS,AS,..)

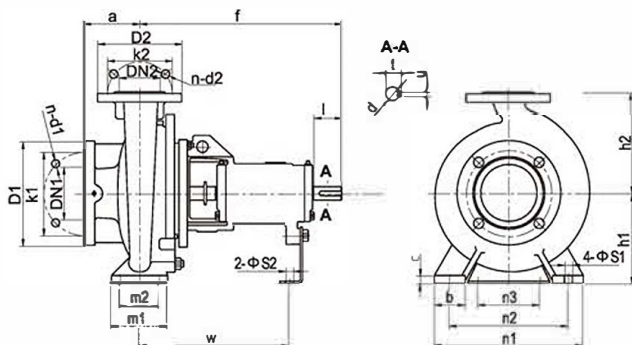
Material of Construction

Part	Standard Material	Optional (on request)
Casing	Cast Iron	Ductile Iron / ASTM304 (CF8) / ASTM316 (CF8M)
Impeller	Brass	Cast Iron / ASTM304 (CF8) / ASTM316 (CF8M)
Shaft	ASTM420	ASTM304 / ASTM316 / ASTM1045
Shaft Seal	Mechanical Seal	Gland Packing

Operating Data

Flow Rate (Q)	up to 1584 [m ³ /h]
Head (H)	up to 150 [m]
Speed	1450 or 2900 rpm (50Hz) and 1750 or 3500 rpm (60Hz)
Max. Temperature	85°C (standard) ; 105°C (on request)
Working Pressure	1.0 MPa standard: 1.6 MPa (on request)
Conveying Medium	Clean water or liquids similar to clean water in physical property

Flange Dimensions



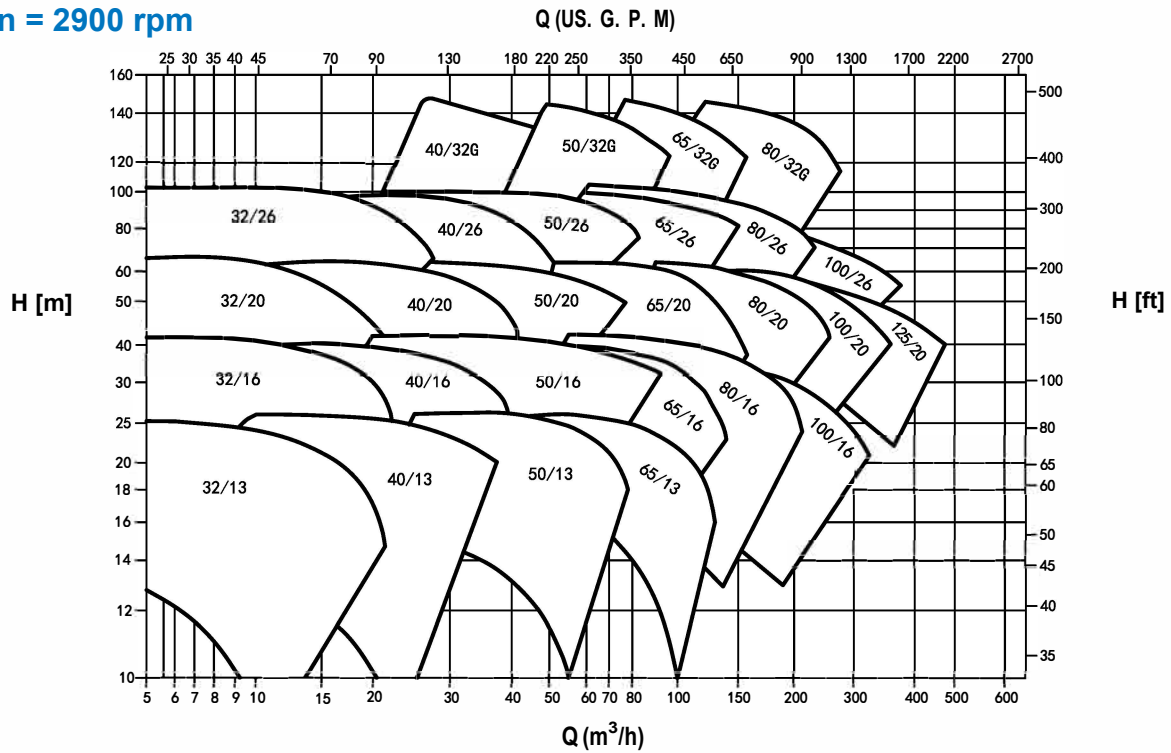
ISO7005.2 DIN2501 PN16 GB/T17241.6 PN1.6

DN1/DN2	32	40	50	65	80	100	125
D1/D2	140	150	165	185	200	220	250
K1/K2	100	110	125	145	160	180	210
n-d1/n-d2	4-Ø18	4-Ø18	4-Ø18	4-Ø18	8-Ø18	8-Ø18	8-Ø18
DN1/DN2	150	200	250	300	350	400	
D1/D2	285	340	405	460	520	580	
K1/K2	240	295	355	410	470	525	
n-d1/n-d2	8-Ø22	12-Ø22	12-Ø26	12-Ø26	16-Ø26	16-Ø30	

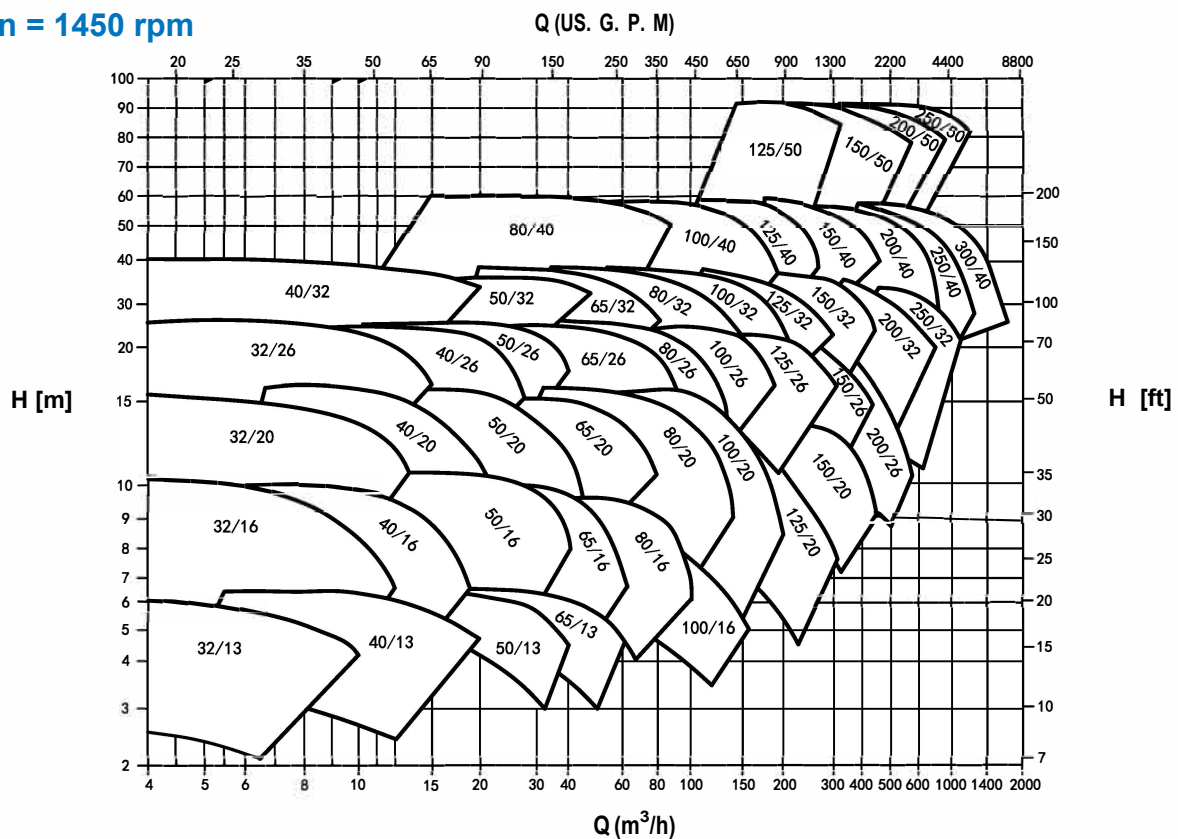
PERFORMANCE RANGE

50 Hz

EA, n = 2900 rpm



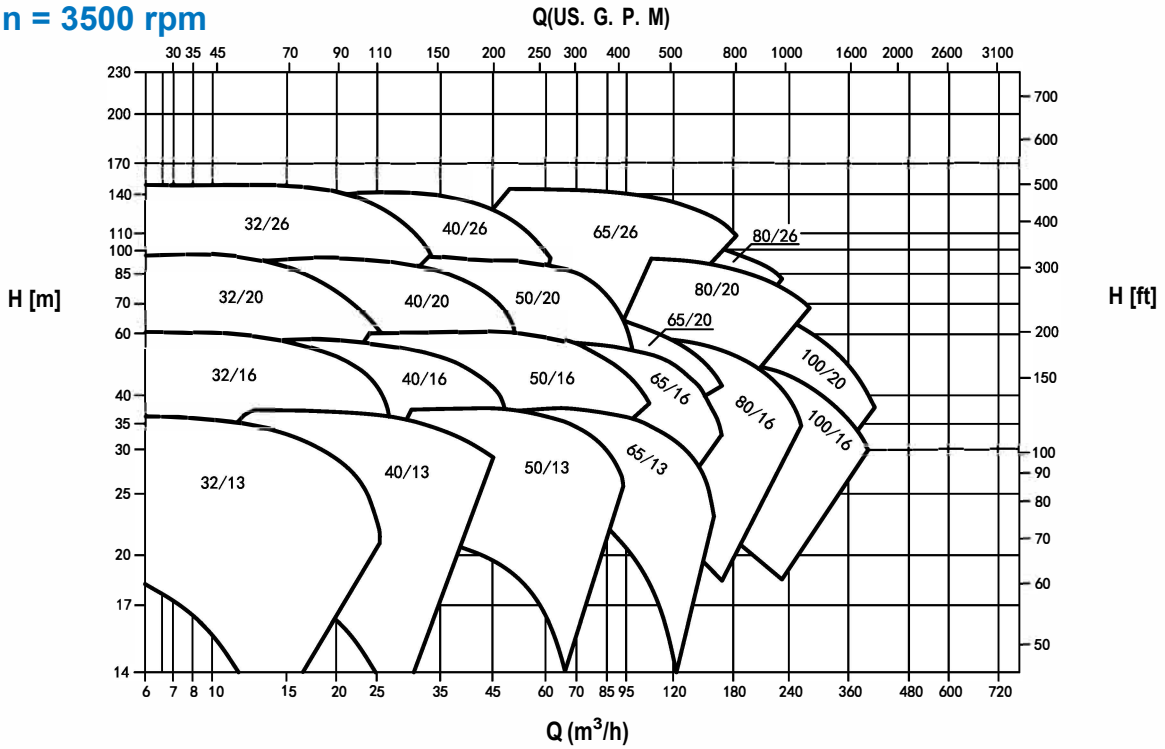
EA, n = 1450 rpm



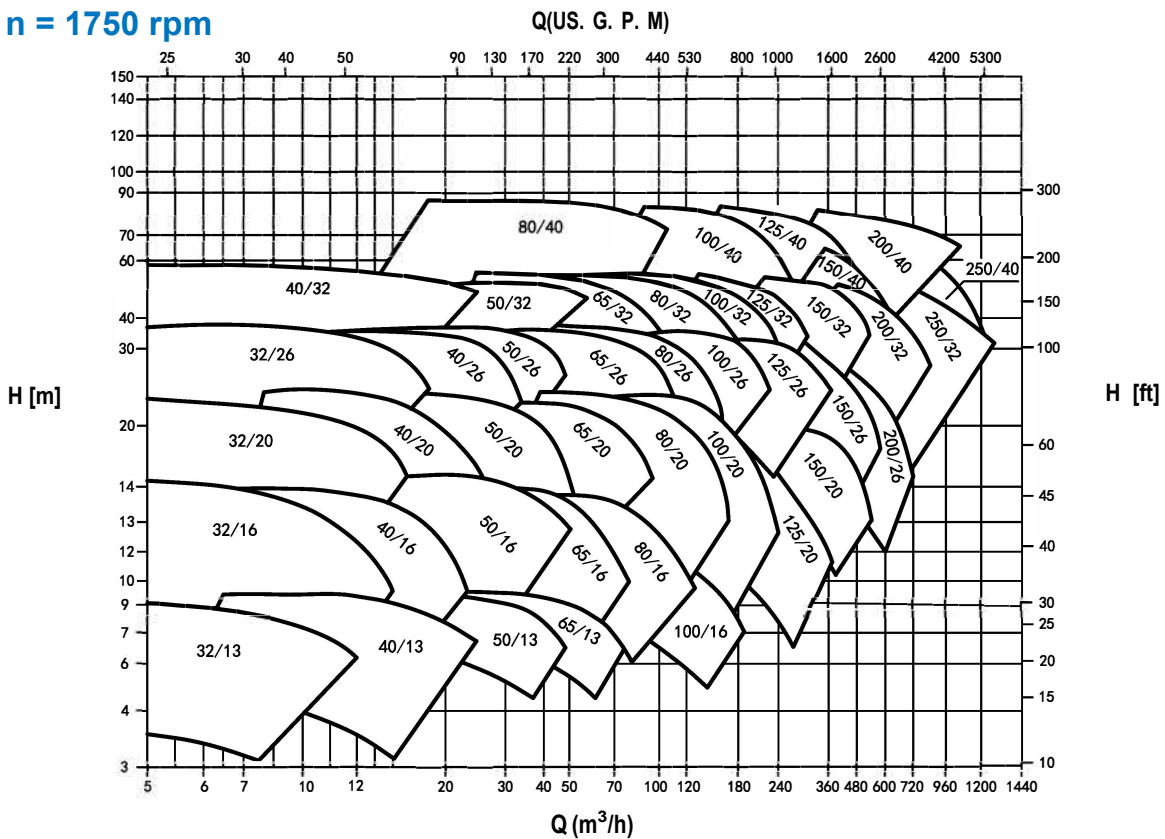
PERFORMANCE RANGE

60 Hz

EA, n = 3500 rpm

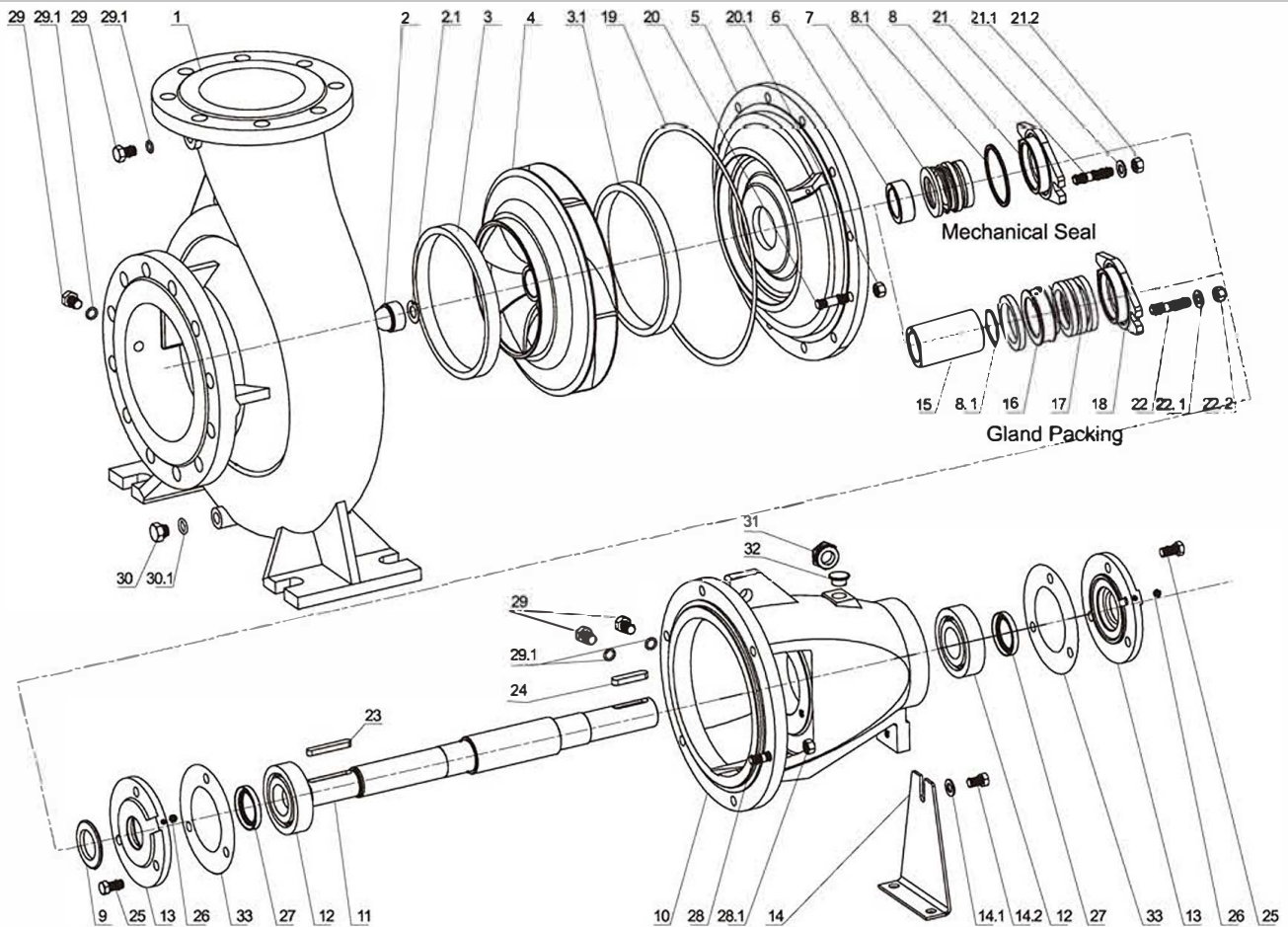


EA, n = 1750 rpm



EXPLODED VIEW

Parts List



Part No.	Description	Part No.	Description	Part No.	Description
1	Casing	14	Support Foot	22.2	Screw Nut
2	Impeller Nut	14.1	Flat Washer	23	Key
2.1	spring lock washer	14.2	Elastic Washer	24	Key
3	Front-Wearing	14.3	Screw Bolt	25	Screw Bolt
3.1	Back-Wearing	15	Packing Sleeve	26	Oil Cup M6
4	Impeller	16	Packing Seal Cage	27	Felting
5	Casing Cover	16	Throat Bushing	27	Oil Seal
6	Shaft Spacer	17	Gland Packing	28	Stud Bolt
7	Mech.Seal	18	Gland Cover	28.1	Screw Nut
8	Seal Cover	19	Casing Gasket	29	Plug
8.1	O-ring	20	Stud Bolt	29.1	Plug Gasket
9	Rubber Slinger	20.1	Screw Nut	30	Plug
10	Bearing Housing	21	Stud Bolt	30.1	Plug Gasket
11	Shaft	21.1	Flat Washer	31	Oil Scale
12	Bearing	21.2	Screw Nut	32	Oil Cover
13	Bearing Cover	22	Stud Bolt	33	Throat Bushing Gasket
		22.1	Flat Washer		



TECNODYNE

TECNODYNE PUMPS INC.

02 Sheppard Ave E, North York
Ontario, Canada M2N 5Y7
T: +1 (647) 255-2270
info@tecnodyne.ca
www.tecnodyne.ca

TECNODYNE (China) Ltd.

Suite C, Level 7, World Trust Tower
50 Stanley Street, Central
Hong Kong
hk@tecnodynepumps.com
www.tecnodynepumps.com