

ECMI Series

Stainless Steel Horizontal Multistage Pumps 50Hz

PRODUCT CATALOGUE



PRODUCT OVERVIEW

Efficient Hydraulic Design

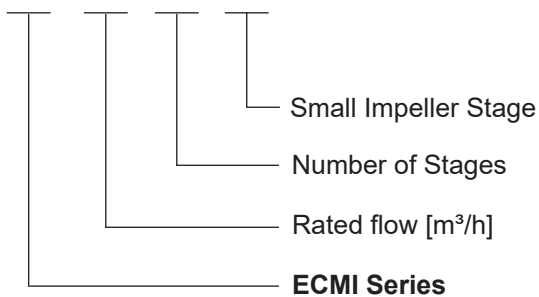
Product Description

ECMI is a horizontal multistage non-self-priming centrifugal pump, constructed with a long-shaft electric motor. Compact design with axial inlet and radial outlet. It is suitable for water supply, pressure boosting, Irrigation, heating, cooling, and garden watering beside other special applications.



Model Description

ECMI 8 - 3 / 1



Material

- Pump body: AISI 304
- Impeller: AISI 304
- Shaft: AISI 304
- Mechanical seal: SIC/Carbon

Motors

- Insulation class: F
- Protection class: IPX4
- Copper winding
- Built-in thermal protector for single phase motor
- Ambient temperature: +40°C

Applications

ECMI is suitable for

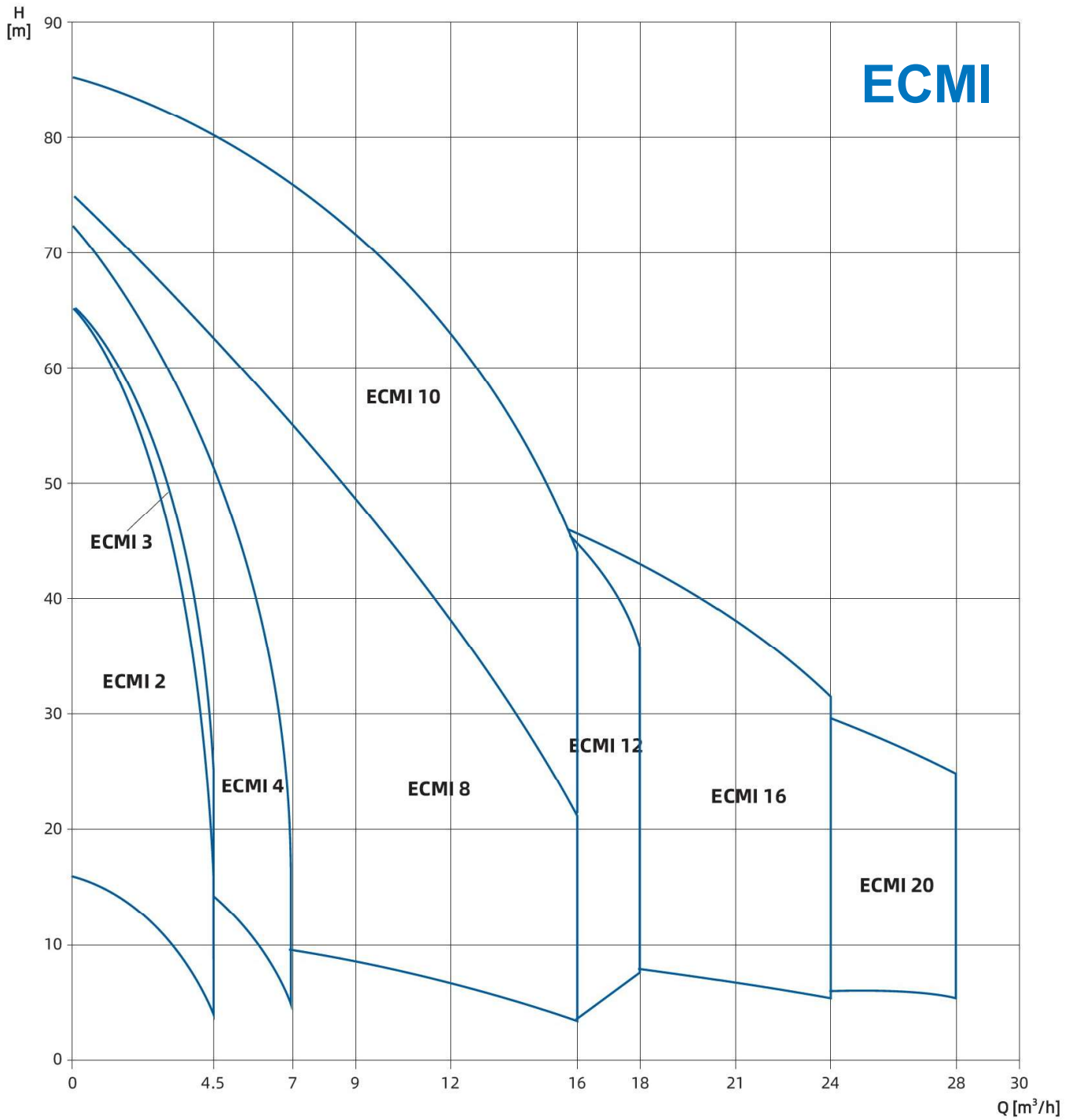
- Water supply and pressure boosting
- Heating and cooling systems
- Irrigation
- Garden watering

Pump

- AISI304 welded shaft
Max. liquid temperature: +60°C
- Max. inlet pressure: limited by Max. operating pressure
- Max. operation pressure: 8 bar
- Liquid PH Value: 6.5 - 8.5
- Altitude: up to 1000 m

PERFORMANCE RANGE

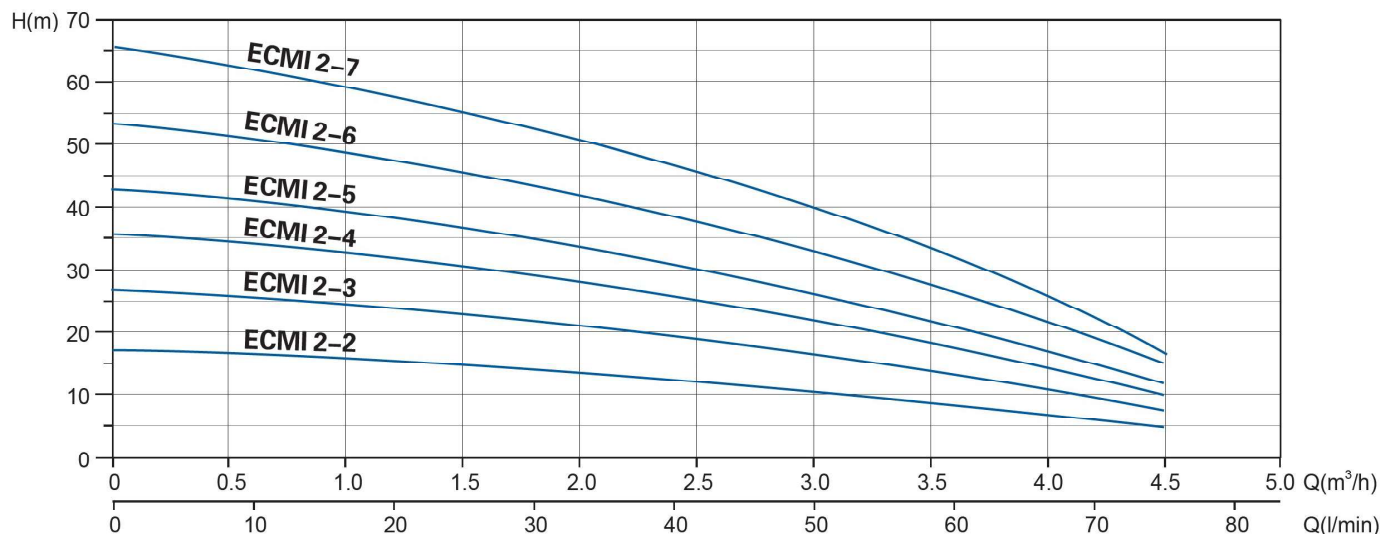
50Hz



PERFORMANCE RANGE

ECMI 2 - 50Hz

Performance Curves



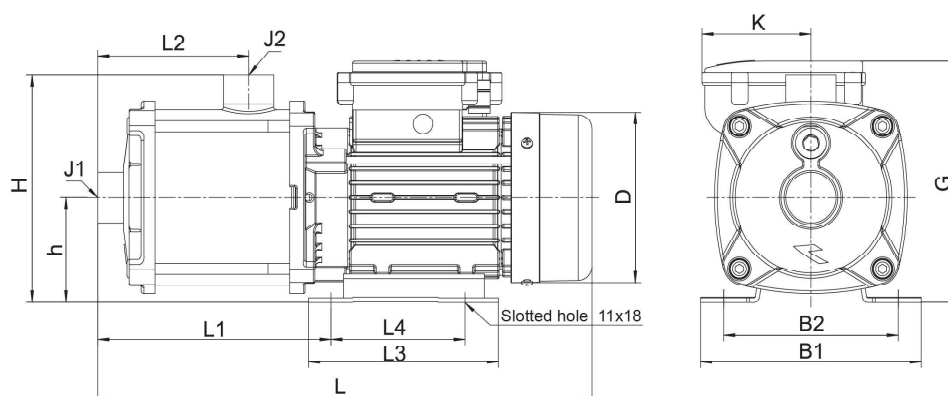
Technical Data

Model	Power		Q [m³/h] Q [l/min]	0	1	1.5	2	2.5	3	3.5	4	4.5
	kW	hp		0	16.7	25	33.3	41.7	50	58.3	66.7	75
ECMI 2-2	0.25	0.33	H [m]	17	16	14.5	13.5	12	10.5	8.5	7	4.5
ECMI 2-3	0.37	0.5		27	24.5	23	20.5	19	17	14	11	7
ECMI 2-4	0.37	0.5		36	33	31	27.5	25.5	22.5	19	14.5	9.5
ECMI 2-5	0.55	0.75		44	40	37	33.5	30.5	27	22.5	17	11
ECMI 2-6	0.75	1.0		54	49.5	46	41.5	38.5	34	29	21.5	15
ECMI 2-7	0.75	1.0		65.5	59.5	55.5	51	46	41	34	26	16.5

DIMENSIONS & WEIGHT

ECMI 2 - 50Hz

Dimensional Drawing



Dimensions

Model	L	L1	L2	L3	L4	H	h	B1	B2	D	G	K	J1/J2
											3~/1~	3~/1~	
ECMI 2-2	305	131	72	136	96	163	75	158	125	122	163/172.5	/89	G1/G1
ECMI 2-3													
ECMI 2-4	323	149	90										
ECMI 2-5	354	167	108										
ECMI 2-6	382	185	126										
ECMI 2-7	400	203	144	146.5	172/182.5								

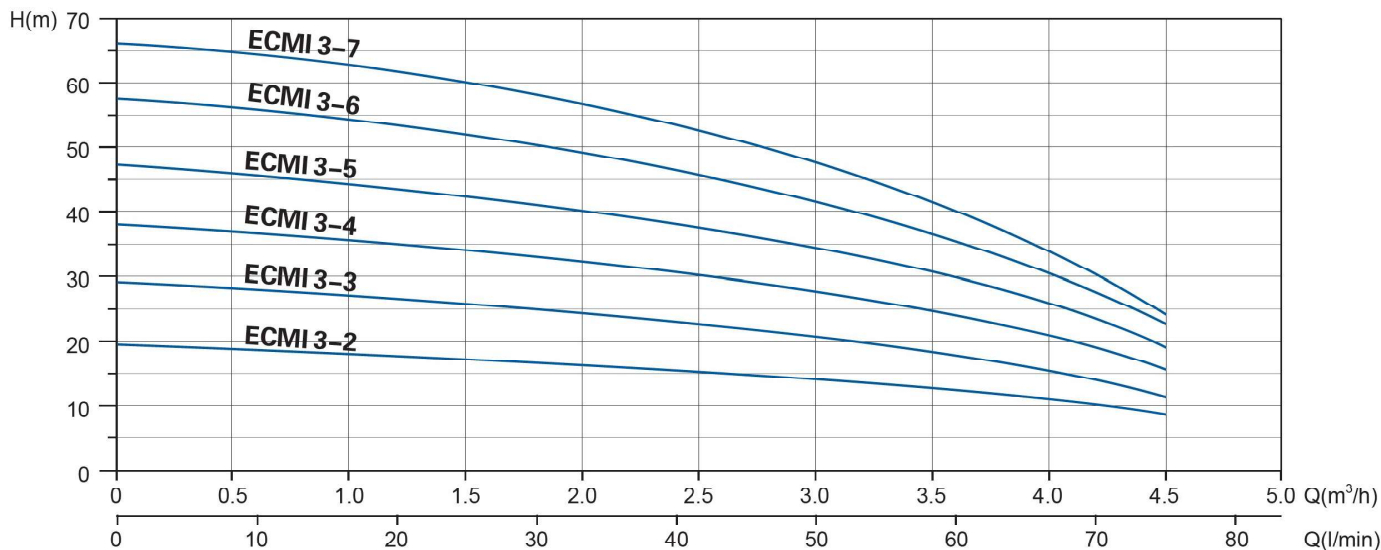
Packing information

Model	G.W. [Kg]		L x W x H [mm]
	3~	1~	
ECMI 2-2	7.2	7.1	344x189x211
ECMI 2-3	7.6	8.3	344x189x211
ECMI 2-4	7.7	9.7	362x189x211
ECMI 2-5	8.8	10.3	392x189x211
ECMI 2-6	11.4	12.4	420x214x226
ECMI 2-7	11.6	12.8	438x214x226

PERFORMANCE RANGE

ECMI 3 - 50Hz

Performance Curves



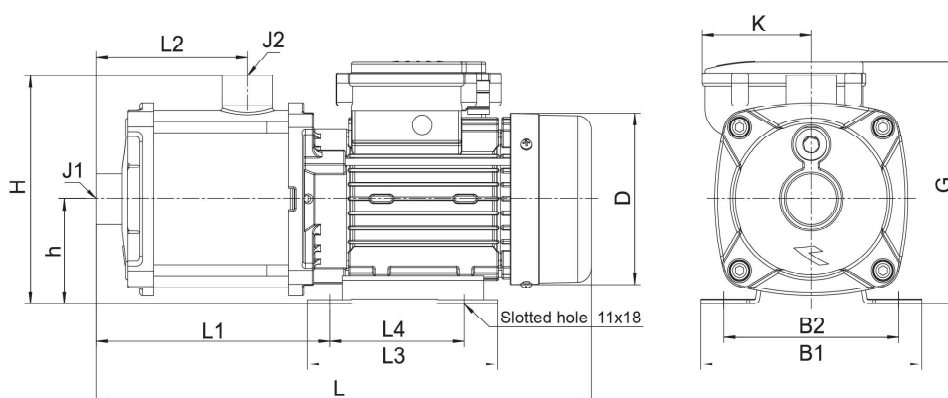
Technical Data

Model	Power		Q [m³/h]	0	1	1.5	2	2.5	3	3.5	4	4.5
	kW	hp	Q [l/min]	0	16.7	25	33.3	41.7	50	58.3	66.7	75
ECMI 3-2	0.25	0.33	H [m]	19.5	18	17.5	16.5	15	14.5	13	11	9
ECMI 3-3	0.37	0.5		29	26	25.5	24.5	23	21	18	16	12
ECMI 3-4	0.55	0.75		38	35.5	34	32	30.5	28	25	21	16
ECMI 3-5	0.55	0.75		47.5	44.5	42.5	40	37.5	35	29	24	19
ECMI 3-6	0.75	1.0		57.5	53.5	52	49	45	42	35	31	23
ECMI 3-7	0.85	1.15		66	62	59	55.5	52	48.5	42	33	24

DIMENSIONS & WEIGHT

ECMI 3 - 50Hz

Dimensional Drawing



Dimensions

Model	L	L1	L2	L3	L4	H	h	B1	B2	D	G		K		J1/J2
											3~/1~	3~/1~			
ECMI 3-2	305	131	72	136	96	163	75	158	125	122	163/172.5			G1/G1	
ECMI 3-3															
ECMI 3-4	336	149	90												
ECMI 3-5	354	167	108												
ECMI 3-6	382	185	126												
ECMI 3-7	400	203	144							146.5	172/182.5	/89			

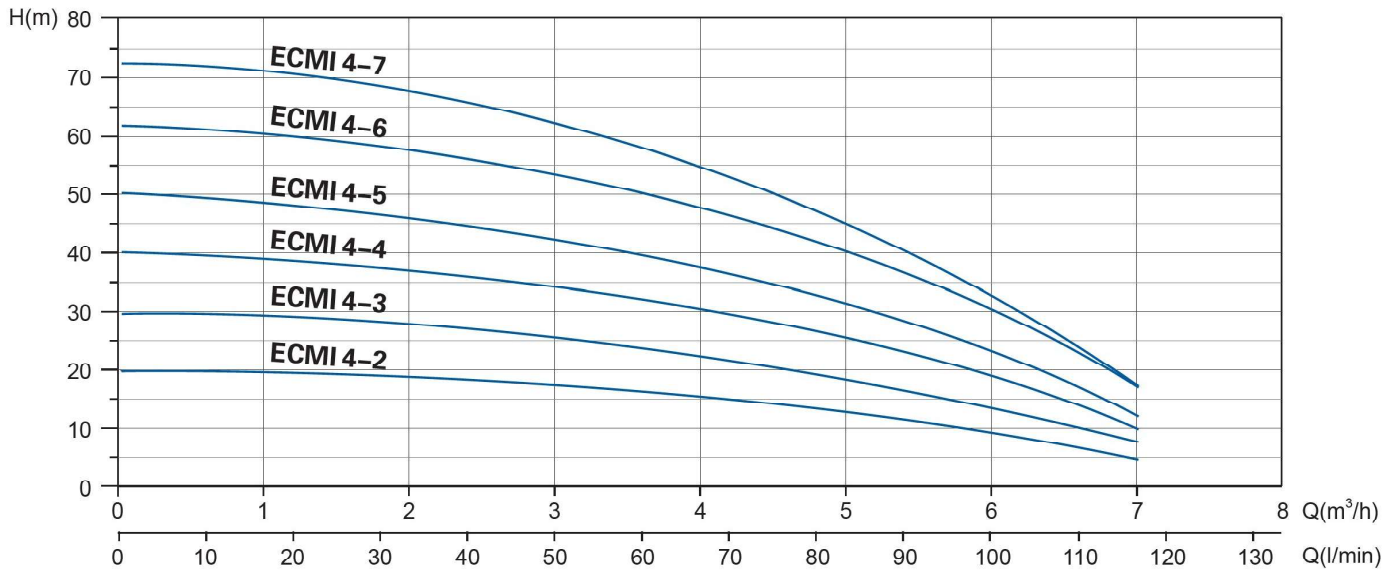
Packing information

Model	G.W. [Kg]		L x W x H [mm]
	3~	1~	
ECMI 3-2	6.9	7.5	344x189x211
ECMI 3-3	7.9	7.9	344x189x211
ECMI 3-4	8.5	9.1	374x189x211
ECMI 3-5	9.3	10.4	392x189x211
ECMI 3-6	11.3	11.7	420x214x226
ECMI 3-7	11.6	12.8	438x214x226

PERFORMANCE RANGE

ECMI 4 - 50Hz

Performance Curves



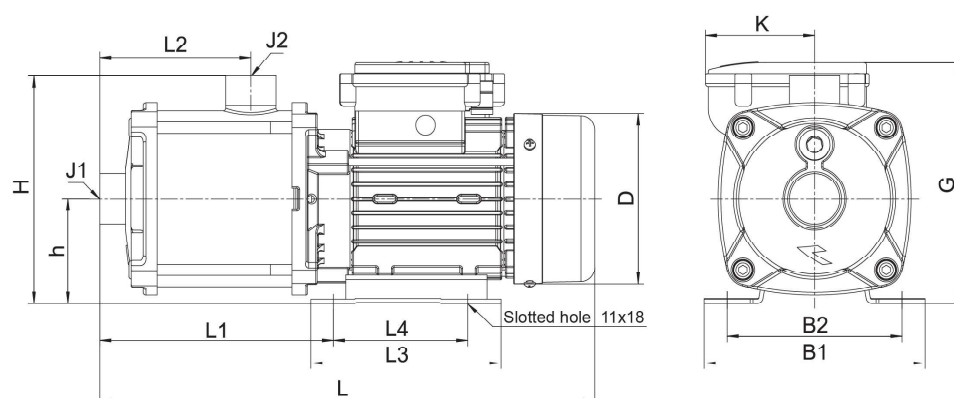
Technical Data

Model	Power		Q [m³/h]	0	1	2	3	4	4.5	5	6	7
	kW	hp	Q [l/min]	0	16.7	33.3	50	67	75	83	100	117
ECMI 4-2	0.37	0.5	H [m]	20	19.5	18.5	17	15.5	14.5	13	9.5	5
ECMI 4-3	0.55	0.75		30	29	27	25	22.5	21	18.5	13	10
ECMI 4-4	0.75	1.0		40	38.5	36.5	34.5	30.5	29	26	19	10
ECMI 4-5	0.75	1.0		50	47.5	45.5	42.5	37.5	35.5	32	23	12
ECMI 4-6	1.1	1.5		61.5	59	56	53	47.5	45	41	30.5	17
ECMI 4-7	1.3	1.75		72	68	64.5	60.5	55	50.5	45.5	32	17

DIMENSIONS & WEIGHT

ECMI 4 - 50Hz

Dimensional Drawing



Dimensions

Model	L	L1	L2	L3	L4	H	h	B1	B2	D	G		K		J1/J2
											3~/1~	3~/1~	3~/1~	3~/1~	
ECMI 4-2	308.5	134	75	136	96	163	75	158	125	122	163/172.5	/89	G1¼ / G1		
ECMI 4-3	321														
ECMI 4-4	349	152	93												
ECMI 4-5	367	170	111	155	125	178	90	178	140	167	203/212	/105.5			
ECMI 4-6	411	188	129												
ECMI 4-7	429	206	147												

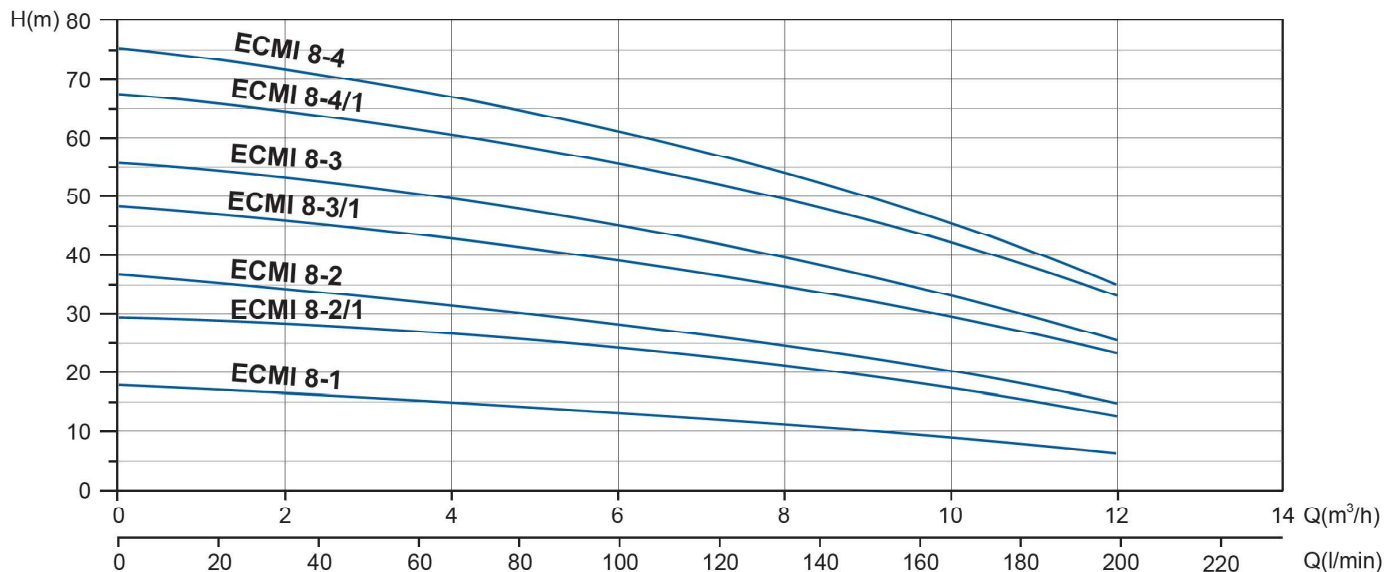
Packing information

Model	G.W. [Kg]		L x W x H [mm]
	3~	1~	
ECMI 4-2	7.5	8.0	344x189x211
ECMI 4-3	8.0	8.7	357x189x211
ECMI 4-4	9.9	11	384x214x226
ECMI 4-5	10.8	12.2	402x214x226
ECMI 4-6	13.1	16.5	446x244x251
ECMI 4-7	13.4	16.8	464x244x251

PERFORMANCE RANGE

ECMI 8 - 50Hz

Performance Curves



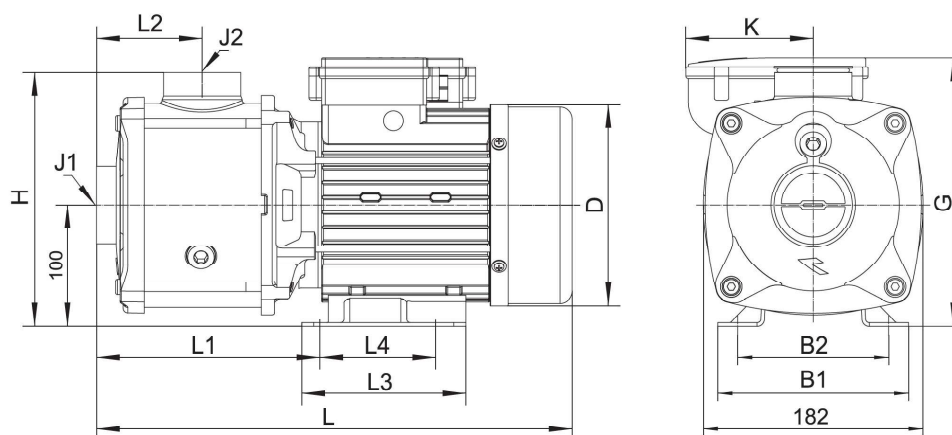
Technical Data

Model	Power		Q [m³/h]	0	2	4	5	6	7	8	9	10	12
	kW	hp		Q [l/min]	0	33.3	67	83	100	117	134	150	166
ECMI 8-1	0.55	0.75	H [m]	18	16.5	15.5	15	13.5	13	11.5	10.5	9	6.5
ECMI 8-2/1	1.0	1.36		29.5	27.5	26	25	24	23	21.5	19	18	13
ECMI 8-2	1.0	1.36		37	34	31.5	30	28	26	24.5	22.5	20	15
ECMI 8-3/1	1.5	2.0		48.5	45.5	44	42	40	38	35	33	30	23.5
ECMI 8-3	1.85	2.5		56	53.5	50	47.5	45.5	42.5	40	37	33	25.5
ECMI 8-4/1	2.2	3.0		67.5	63	60.5	58.5	55.5	53	49.5	46.5	42	33
ECMI 8-4	2.2	3.0		75.5	71.5	68	64.5	62	58	54	50.5	46	35

DIMENSIONS & WEIGHT

ECMI 8 - 50Hz

Dimensional Drawing



Dimensions

Model	L	L1	L2	L3	L4	B1	B2	D	G		K	H	J1/J2
									3~	1~			
ECMI 8-1	378	186	102.5	132	96	158	125	146.5	196	207.5	/89	210	G1½ / G1½
ECMI 8-2/1													
ECMI 8-2													
ECMI 8-3/1	410	200	102.5	136	96	158	125	167	213	222	/105.5		
ECMI 8-3									410 (470)	213			
ECMI 8-4/1	440 (500)	230	132.5	136 (170)	96 (140)	158 (200)	125 (160)	167 (175)	213	237	/107		
ECMI 8-4	213											237	/107

* Inside “()” is the size of single-phase motor

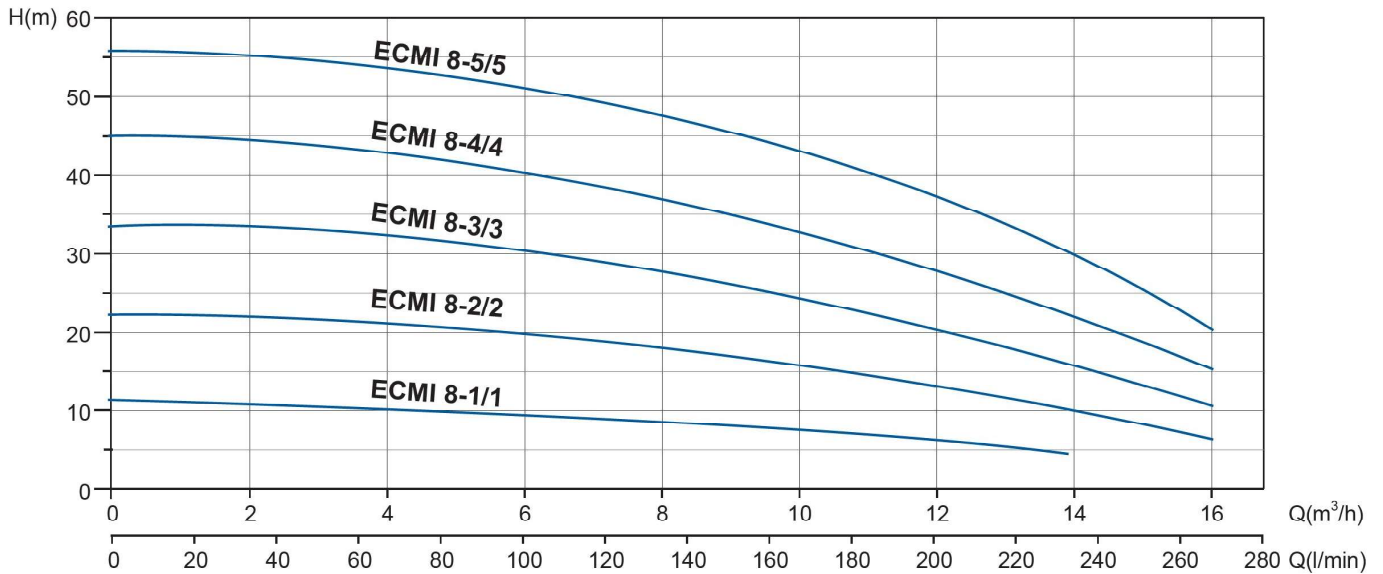
Packing information

Model	G.W. [Kg]		L x W x H [mm]	
	3~	1~	3~	1~
ECMI 8-1	11.5	12.5	423x234x256	
ECMI 8-2/1	13.0	14.5	423x234x256	
ECMI 8-2	14.0	14.5	423x234x256	
ECMI 8-3/1	16.5	19.0	455x244x266	
ECMI 8-3	17.5	22.5	455x244x266	515x244x276
ECMI 8-4/1	20.0	24.0	485x244x266	545x244x276
ECMI 8-4	20.0	25.0	485x244x266	545x244x276

PERFORMANCE RANGE

ECMI 8 - 50Hz

Performance Curves



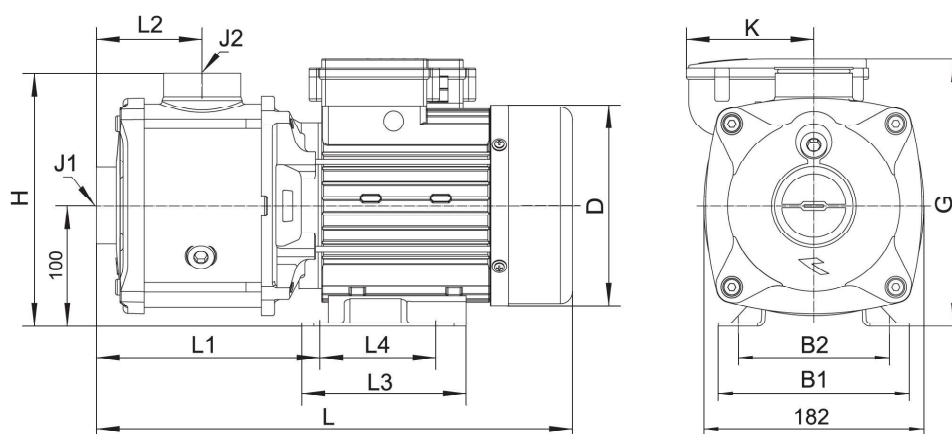
Technical Data

Model	Power		Q [m³/h]	0	2	4	6	8	10	12	14	16
	kW	hp	Q [l/min]	0	33.3	67	100	134	166	200	233	268
ECMI 8-1/1	0.55	0.75	H [m]	11	10.5	10	9.5	8.5	7.5	6.5	4.5	-
ECMI 8-2/2	0.75	1.0		22	21	20.5	19.5	18	16	13	9.5	6.5
ECMI 8-3/3	1.3	1.75		33.5	33	32	30	28	25	20	15.5	11
ECMI 8-4/4	1.5	2.0		45	43.5	42.5	40.5	37.5	33	27.5	22	15.5
ECMI 8-5/5	2.2	3.0		56	55	53.5	52	48	42.5	37.5	29	20.5

DIMENSIONS & WEIGHT

ECMI 8 - 50Hz

Dimensional Drawing



Dimensions

Model	L	L1	L2	L3	L4	B1	B2	D	G		H	J1/J2
									3~/1~	3~/1~		
ECMI 8-1/1	378	186	102.5	132	96	158	125	146.5	196/207.5		/89	G1½ / G1½
ECMI 8-2/2												
ECMI 8-3/3	410	200	102.5	136	96	158	125	167	213/222		/105.5	
ECMI 8-4/4	440	230	132.5									
ECMI 8-5/5	470 (530)	260	162.5	136 (170)	96 (140)	158 (200)	125 (160)	167 (175)	213/237		/107	

* Inside “()” is the size of single-phase motor

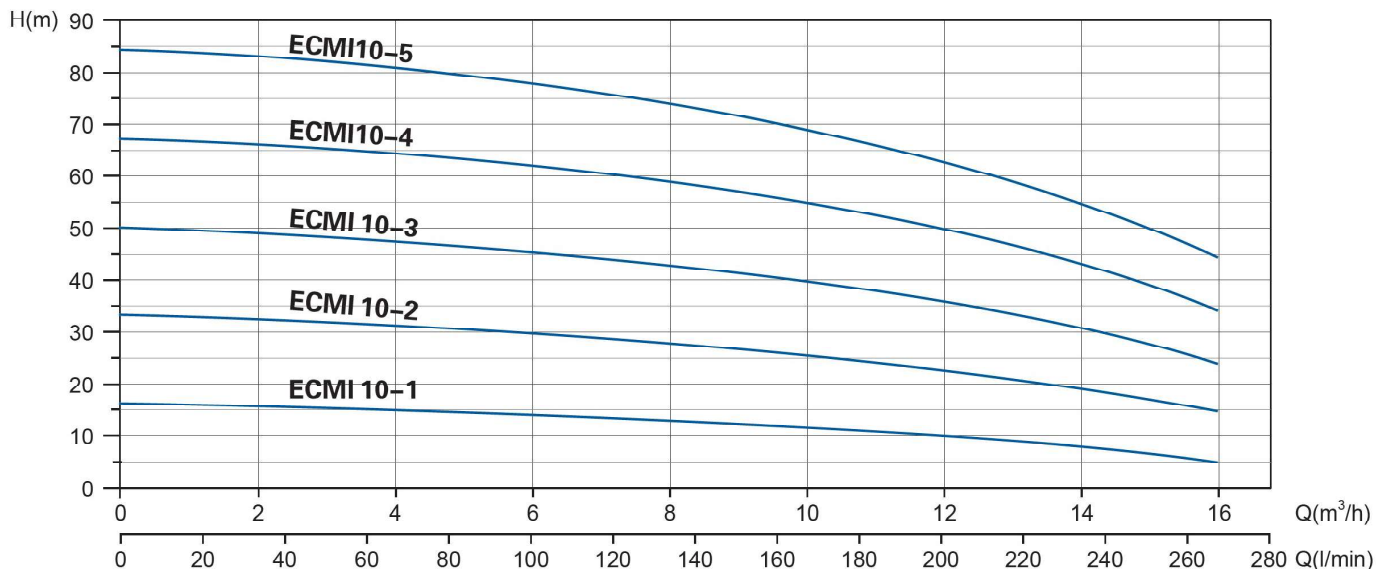
Packing information

Model	G.W. [Kg]		L x W x H [mm]	
	3~	1~	3~	1~
ECMI 8-1/1	10.5	11.5	423x234x256	
ECMI 8-2/2	12.5	13.5	423x234x256	
ECMI 8-3/3	14.5	18.0	455x244x266	
ECMI 8-4/4	17.5	20.5	485x244x266	
ECMI 8-5/5	20.5	24.5	515x244x266	575x244x276

PERFORMANCE RANGE

ECMI 10 - 50Hz

Performance Curves



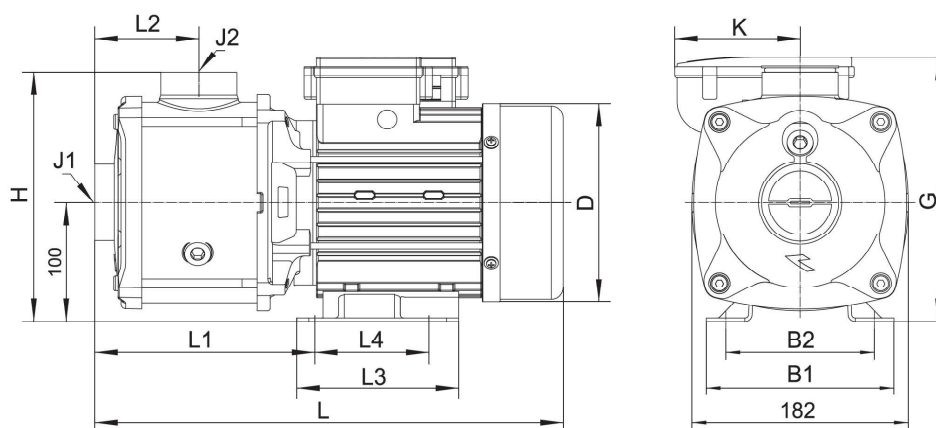
Technical Data

Model	Power		Q [m³/h]	0	2	4	6	8	10	12	14	16
	kW	hp	Q [l/min]	0	33.3	67	100	134	166	200	233	268
ECMI 10-1	0.65	0.9	H [m]	16.5	16	15	14	12.5	11.5	10	8	5
ECMI 10-2	1.3	1.75		33	32	30.5	29	27.5	25.5	22.5	19	14.5
ECMI 10-3	2.2	3.0		50	48.5	47	45.5	43	39.5	36	30.5	24
ECMI 10-4	3.0	4.0		66.5	64.5	63.5	62	59	55	49.5	43	34
ECMI 10-5	3.5	4.7		84	82	80	78	74	69	63.5	55.5	44

DIMENSIONS & WEIGHT

ECMI 10 - 50Hz

Dimensional Drawing



Dimensions

Model	L	L1	L2	L3	L4	B1	B2	D	G		K	H	J1/J2
									3~/1~	3~/1~			
ECMI 10-1	378	186	102.5	132	96	158	125	146.5	196/207.5	/89	210	G1½ / G1½	
ECMI 10-2	410	200	102.5	136	96	158	125	167	213/222	/105.5			
ECMI 10-3	470	200	102.5	170	140	200	160	175	222/237	/107			
ECMI 10-4	500	230	132.5						222/-	-			
ECMI 10-5	530	260	162.5										

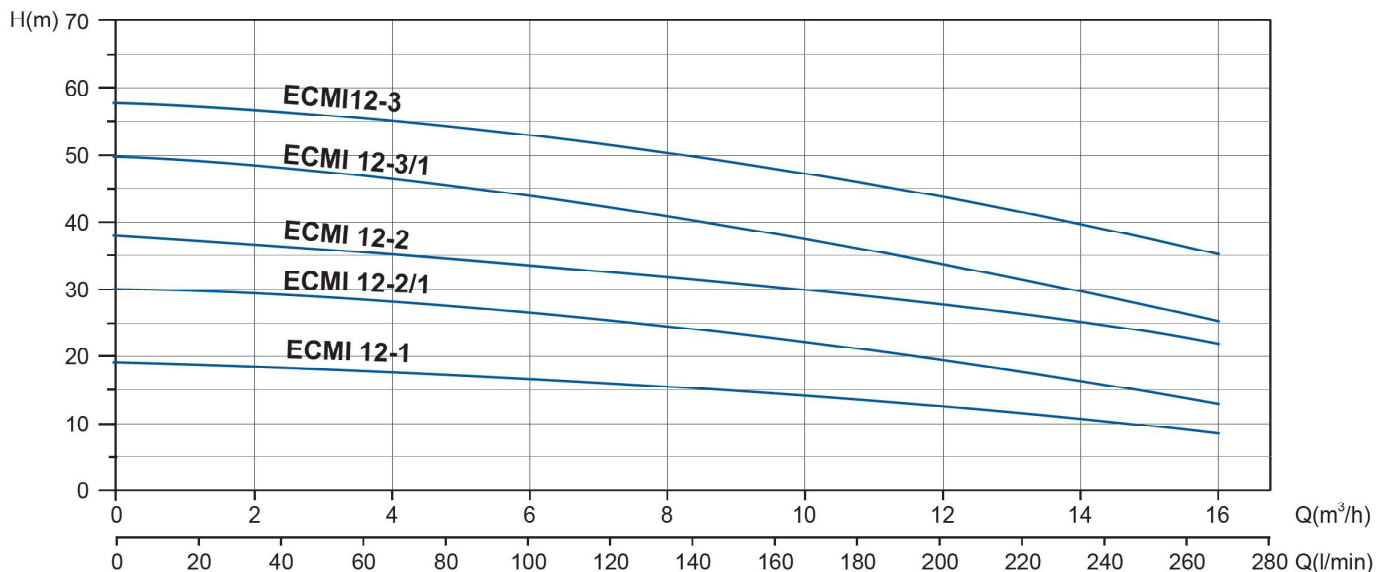
Packing information

Model	G.W. [Kg]		L x W x H [mm]
	3~	1~	
ECMI 10-1	11.5	13.0	423x234x256
ECMI 10-2	16.5	18.0	455x244x266
ECMI 10-3	21.0	23.0	515x244x276
ECMI 10-4	24.0	-	545x244x276
ECMI 10-5	26.5	-	575x244x276

PERFORMANCE RANGE

ECMI 12 - 50Hz

Performance Curves



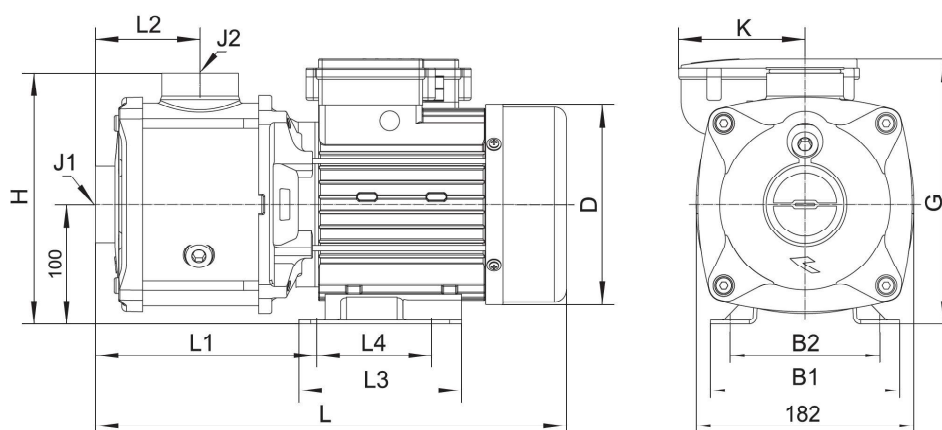
Technical Data

Model	Power		Q [m³/h]	0	2	4	6	8	10	12	14	16
	kW	hp	Q [l/min]	0	33.3	67	100	134	166	200	233	268
ECMI 12-1	1.0	1.36	H [m]	19	18	17.5	16.5	15	14	12.5	10.5	8.5
ECMI 12-2/1	1.3	1.75		30	29	28	27	25	22	19.5	16.5	13
ECMI 12-2	1.85	2.5		38	36	35	34	32.5	30	27.5	25	22
ECMI 12-3/1	2.2	3.0		50	48.5	46.5	44.5	42.5	38	33.5	30	25
ECMI 12-3	3.0	4.0		58	56	54	53.5	50.5	47	43.5	40	35

DIMENSIONS & WEIGHT

ECMI 12 - 50Hz

Dimensional Drawing



Dimensions

Model	L	L1	L2	L3	L4	B1	B2	D	G		H	J1/J2
									3~/1~	3~/1~		
ECMI 12-1	378	186	102.5	132	96	158	125	146.5	196/207.5	/89	210	G1½ / G1½
ECMI 12-2/1	410	200	102.5	136	96	158	125	167	213/222	/105.5		
ECMI 12-2	410	200	102.5	136	96	158	125	167	213/237	/107		
ECMI 12-3/1	(470)	200	102.5	(170)	(140)	(200)	(160)	(175)	213/237	/107		
ECMI 12-3	470	200	102.5	170	140	200	160	175	222/	-		

* Inside “()” is the size of single-phase motor

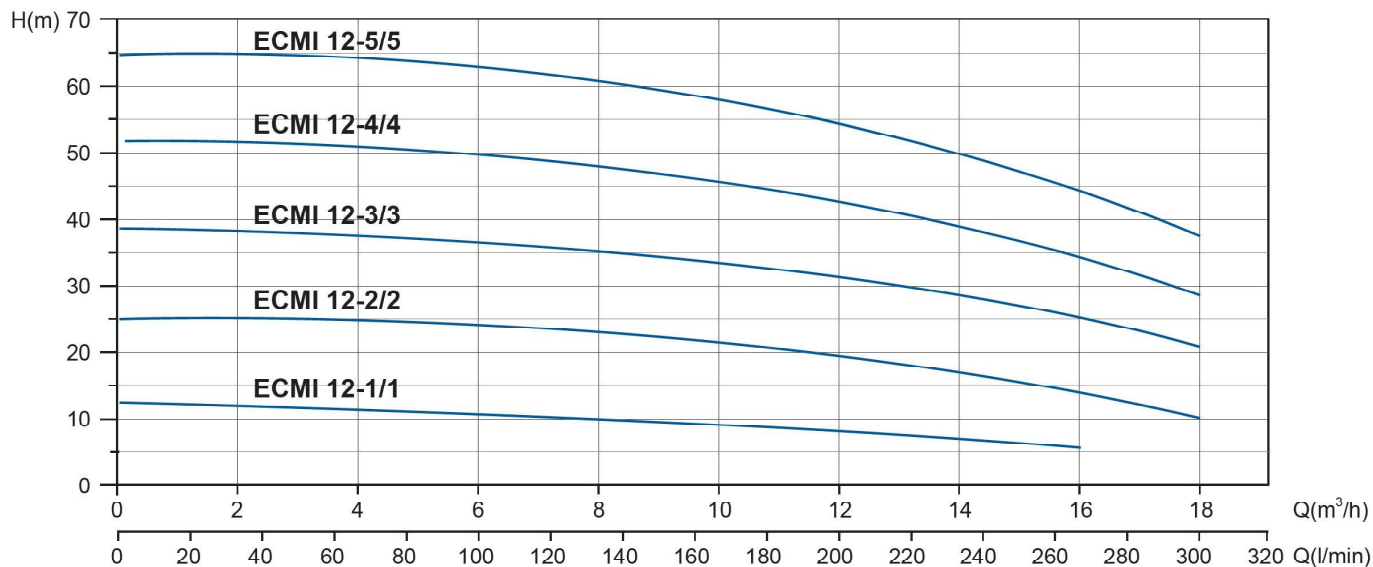
Packing information

Model	G.W. [Kg]		L x W x H [mm]	
	3~	1~	3~	1~
ECMI 12-1	12.5	14.0	423x234x256	
ECMI 12-2/1	15.0	17.5	455x244x266	
ECMI 12-2	17.5	22.0	455x244x266	515x244x276
ECMI 12-3/1	18.5	23.0	455x244x266	515x244x276
ECMI 12-3	23.0	-	515x244x276	-

PERFORMANCE RANGE

ECMI 12 - 50Hz

Performance Curves



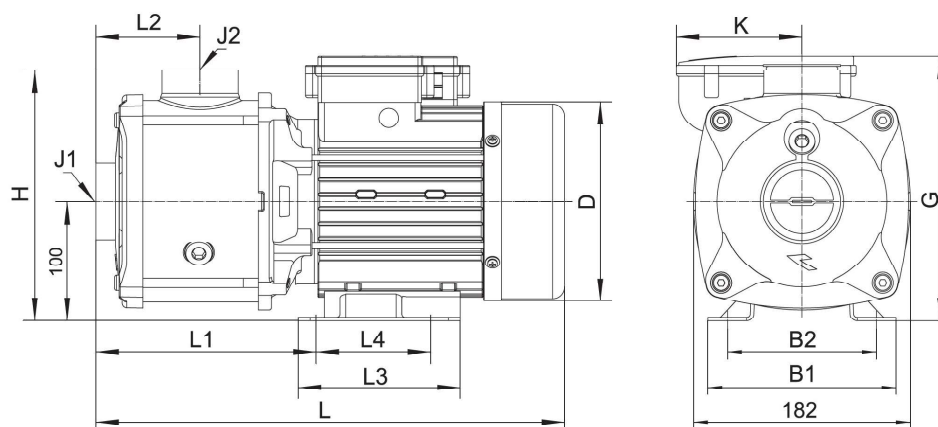
Technical Data

Model	Power		Q [m³/h]	0	2	4	6	8	10	12	14	16	18
	kW	hp	Q [l/min]	0	33.3	67	100	134	166	200	233	268	300
ECMI 12-1/1	0.65	0.9	H [m]	12.5	12	11.5	11	10	9.5	8.5	7	5.5	-
ECMI 12-2/2	1.3	1.75		25.5	25	24	23.5	22.5	21	19.5	16.5	13.5	10
ECMI 12-3/3	1.85	2.5		38.5	37.5	37	36	35	32.5	31.5	28	24.5	20.5
ECMI 12-4/4	2.2	3.0		51.5	50.5	49.5	48.5	47.5	45.5	42.5	38.5	33.5	28.5
ECMI 12-5/5	3.0	4.0		64.5	63	62.5	62	60.5	58	54	48.5	43	37

DIMENSIONS & WEIGHT

ECMI 12 - 50Hz

Dimensional Drawing



Dimensions

Model	L	L1	L2	L3	L4	B1	B2	D	G		H	J1/J2
									3~/1~	3~/1~		
ECMI 12-1/1	378	186	102.5	132	96	158	125	146.5	196/207.5	/89	210	G1½ / G1½
ECMI 12-2/2	410	200	102.5	136	96	158	125	167	213/222	/105.5		
ECMI 12-3/3	410 (470)	200	102.5	136 (170)	96 (140)	158 (200)	125 (160)	167 (175)	213/237	/107		
ECMI 12-4/4	440 (500)	230	132.5						213/237	/107		
ECMI 12-5/5	530	260	162.5	170	140	200	160	175	222/	-		

* Inside “()” is the size of single-phase motor

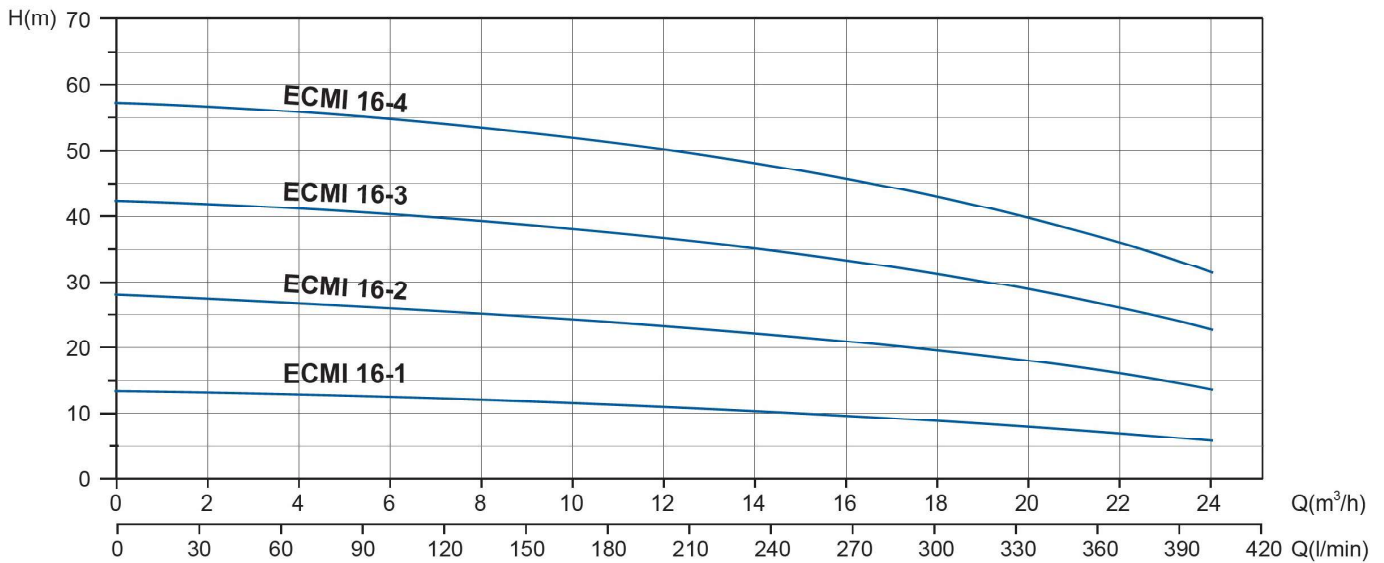
Packing information

Model	G.W. [Kg]		L x W x H [mm]	
	3~	1~	3~	1~
ECMI 12-1	12.5	14.0	423x234x256	
ECMI 12-2/1	15.0	17.5	455x244x266	
ECMI 12-2	17.5	22.0	455x244x266	515x244x276
ECMI 12-3/1	18.5	23.0	455x244x266	515x244x276
ECMI 12-3	23.0	-	515x244x276	-

PERFORMANCE RANGE

ECMI 16 - 50Hz

Performance Curves



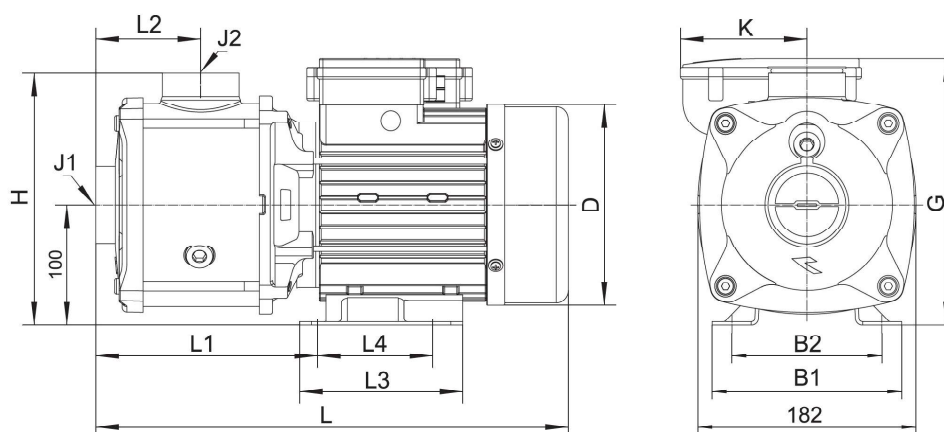
Technical Data

Model	Power		Q [m³/h]	0	4	8	12	14	16	18	20	22	24
	kW	hp	Q [l/min]	0	67	134	200	233	268	300	333	367	400
ECMI 16-1	1.0	1.36	H [m]	13.5	12.5	12	11	10.5	9.5	8.5	8	7	6
ECMI 16-2	1.6	2.15		28	26.5	25.5	23.5	22	21	20	18	16	14
ECMI 16-3	2.6	3.5		42.5	40.5	39.5	37	35.5	33.5	31.5	28.5	26	23
ECMI 16-4	3.5	4.7		57.5	54.5	53.5	50.5	48.5	46	43.5	40	36	31.5

DIMENSIONS & WEIGHT

ECMI 16 - 50Hz

Dimensional Drawing



Dimensions

Model	L	L1	L2	L3	L4	B1	B2	D	G		H	J1/J2
									3~/1~	3~/1~		
ECMI 16-1	363	171	87.5	132	96	158	125	146.5	196/207.5	/89	211	G2/G2
ECMI 16-2	394	185	87.5	136	96	158	125	167	213/222	/105.5		
ECMI 16-3	500	230	132.5	170	140	200	160	175	222/237	/107		
ECMI 16-4	545	275	177.5	170	140	200	160	175	222/	-		

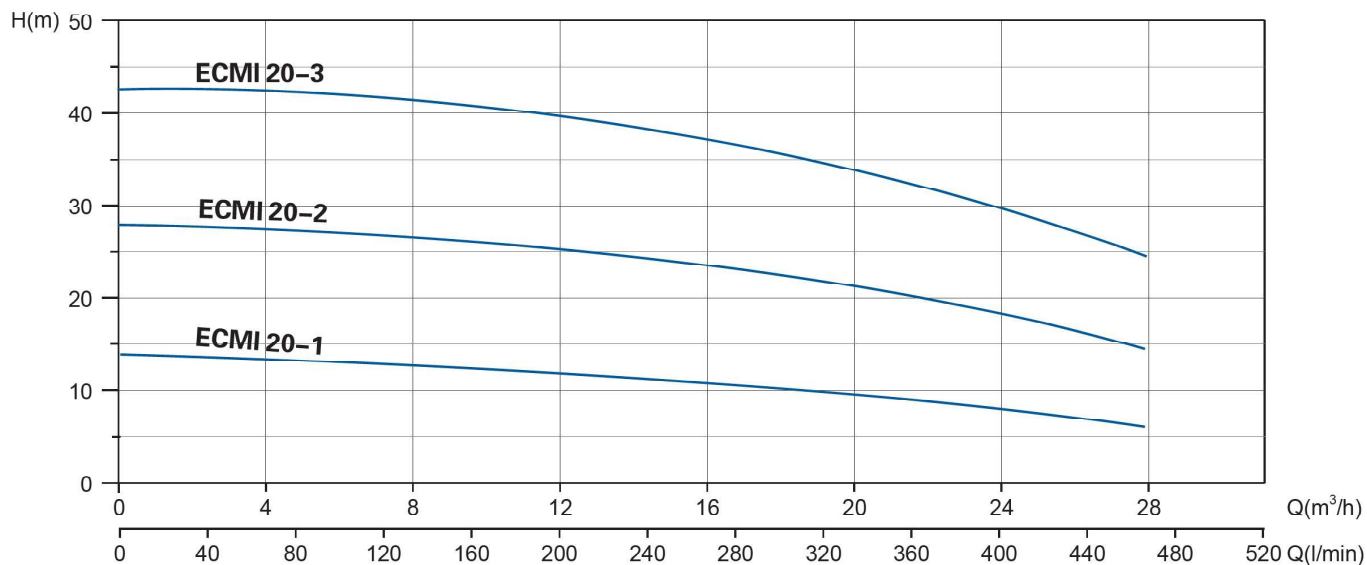
Packing information

Model	G.W. [Kg]		L x W x H [mm]
	3~	1~	
ECMI 16-1	12.0	13.5	408x234x256
ECMI 16-2	17.0	19.0	440x244x266
ECMI 16-3	24.0	25.0	545x244x276
ECMI16-4	27.0	-	590x244x276

PERFORMANCE RANGE

ECMI 20 - 50Hz

Performance Curves



Technical Data

Model	Power		Q [m³/h]	0	5	10	14	16	18	20	22	24	26	28
	kW	hp	Q [l/min]	0	83	166	233	268	300	333	367	400	433	467
ECMI 20-1	1.0	1.36	H [m]	14	13	12	11.5	10.5	10	9.5	8.5	7.5	7	6
ECMI 20-2	2.2	3.0		28	27	26	25	24	23	21.55	20	18	16.5	14.5
ECMI 20-3	3.5	4.7		42.5	41.5	40.5	38.5	37.5	36	34	32	29.5	27	24.5

TECNODYNE

TECNODYNE PUMPS INC.

02 Sheppard Ave E, North York
Ontario, Canada M2N 5Y7
T: +1 (647) 255-2270
info@tecnodyne.ca
www.tecnodyne.ca

TECNODYNE (China) Ltd.

Suite C, Level 7, World Trust Tower
50 Stanley Street, Central
Hong Kong
hk@tecnodynepumps.com
www.tecnodynepumps.com