

EMS Series

Stainless Steel Centrifugal Pumps 50Hz

PRODUCT CATALOGUE



PRODUCT OVERVIEW

Reliable & Efficient

Product Description

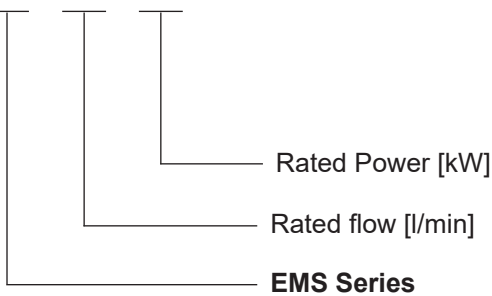
EMS is a high-performance, stainless steel, centrifugal pump. It is suitable for domestic water supply, light commercial applications, pipeline pressurization, garden watering, greenhouse watering, and general industry.

- Max.liquid temperature: 85°C
- Altitude: up to 1000 m



Model Description

EMS 70 / 0.37



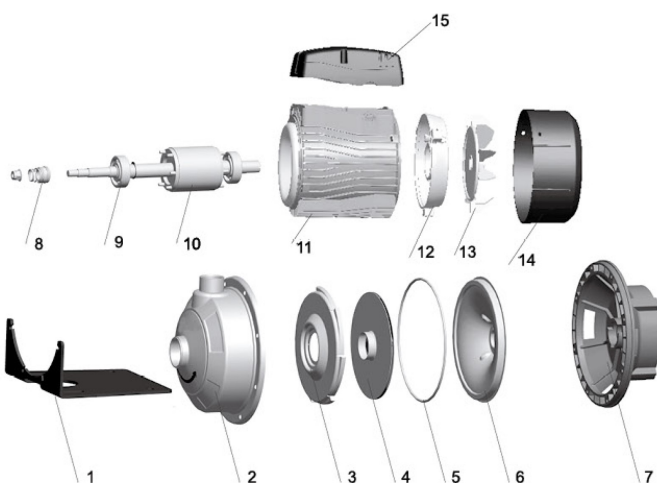
Motors

- Insulation class: F
- Protection class: IPX4
- Copper winding
- Built-in thermal protector for single phase motor
- Ambient temperature: +40°C

Material

Part No.	Description	Material
1	Bottom support	Steel
2	Pump body	AISI 304
3	Diffuser	AISI 304
4	Impeller	AISI 304
5	O-ring	NBR
6	Airproof plate	AISI 304
7	Support	ADC12
8	Mech seal	Ceramic/Carbon
9	Ball bearing	-
10	Rotor	-
11	Stator	-
12	Rear housing	ADC12
13	Fan	PP
14	Fan cover	PP
15	Terminal box	ABS

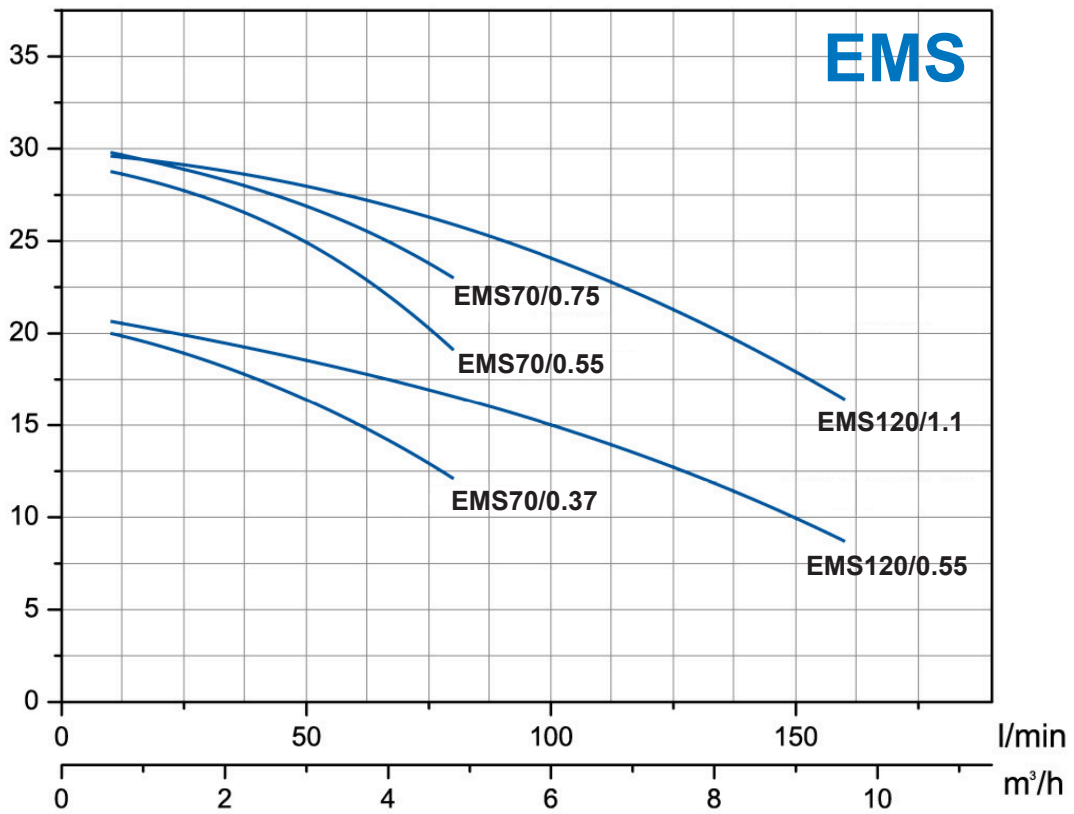
Exploded View



PERFORMANCE RANGE

EMS 70, 120 - 50Hz

Performance Curves



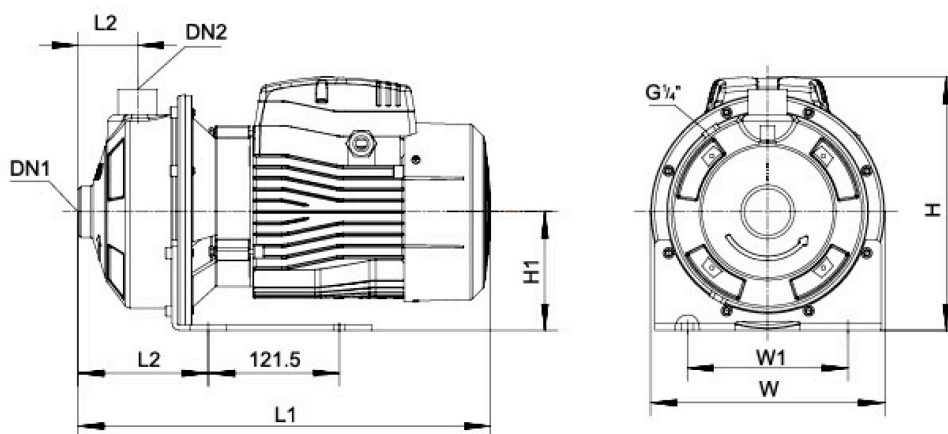
Technical Data

Model	Power		Q [m³/h]	0	1.8	2.4	3.6	4.8	6	7.2	8.4	9.6
	kW	hp		Q [l/min]	0	30	40	60	80	100	120	140
EMS 70/0.37	0.37	0.5	H [m]	20.9	19	18.1	15.7	12.1	-	-	-	-
EMS 70/0.55	0.55	0.75		29.5	27.3	26.3	23.4	19.1	-	-	-	-
EMS 70/0.75	0.75	1.0		30.4	28.5	27.8	26	23	-	-	-	-
EMS 120/0.55	0.55	0.75		20.2	-	-	17.9	16.6	15.1	13.3	11.2	8.7
EMS 120/1.1	1.1	1.5		30.2	-	-	26.7	25.1	23.3	21.2	19	16.4

DIMENSIONS & WEIGHT

EMS 70, 120 - 50Hz

Dimensional Drawing



Dimensions

Model	DN1	DN2	L (mm)	W (mm)	H (mm)	L1 (mm)	L2 (mm)	W1 (mm)	H1 (mm)
EMS 70/0.37	1 1/4"	1"	332	210	224	119	55	149	110
EMS 70/0.55	1 1/4"	1"	332	210	224	119	55	149	110
EMS 70/0.75	1 1/4"	1"	381	210	234	119	55	149	110
EMS 120/0.55	1 1/4"	1"	332	210	224	119	55	149	110
EMS 120/1.1	1 1/4"	1"	381	210	234	119	55	149	110

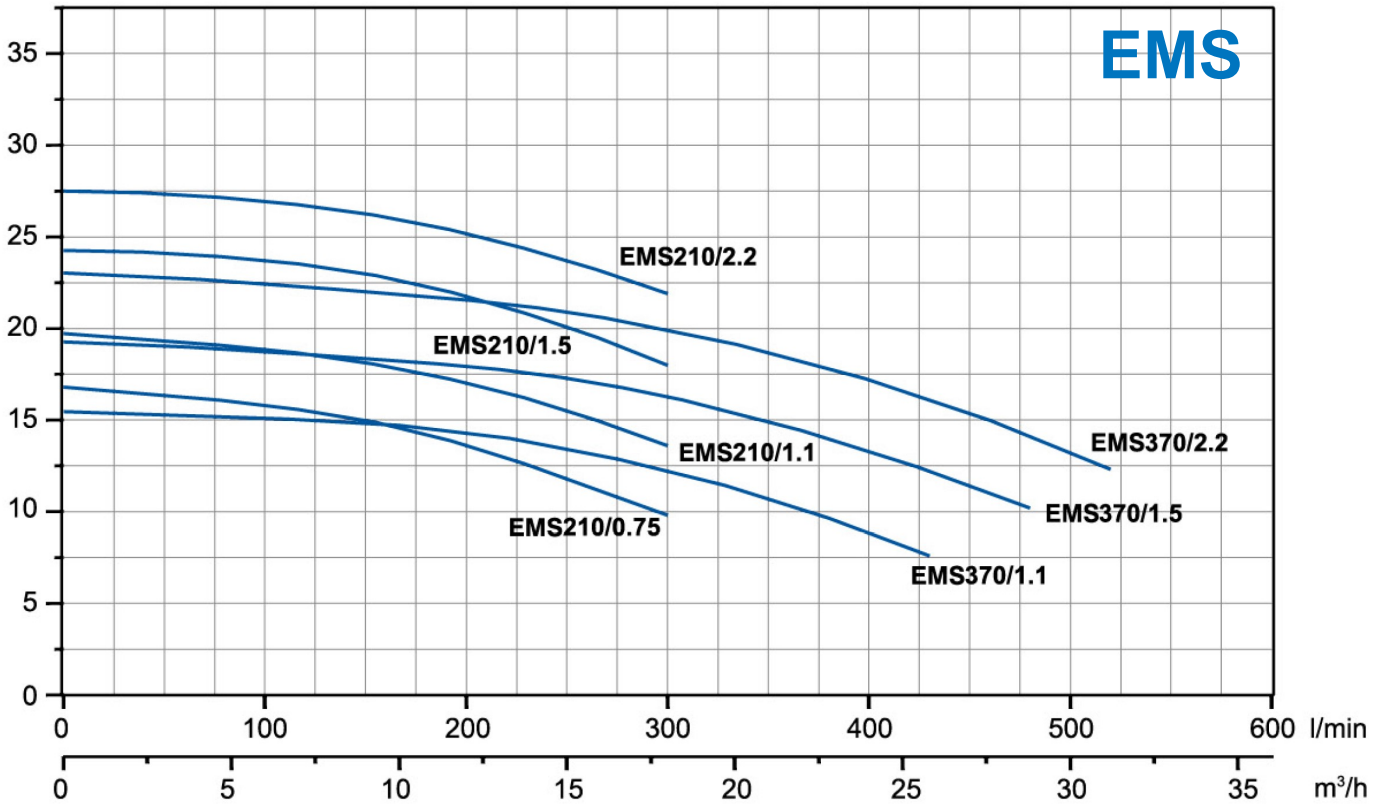
Packing information

Model	G.W. (Kg)	L (mm)	W (mm)	H (mm)	Quantity (PCS/20' TEU)
EMS 70/0.37	10	380	240	270	1200
EMS 70/0.55	11	380	240	270	1200
EMS 70/0.75	14	410	240	270	1104
EMS 120/0.55	11	380	240	270	1200
EMS 120/1.1	15	410	240	270	1104

PERFORMANCE RANGE

EMS 210, 370 - 50Hz

Performance Curves



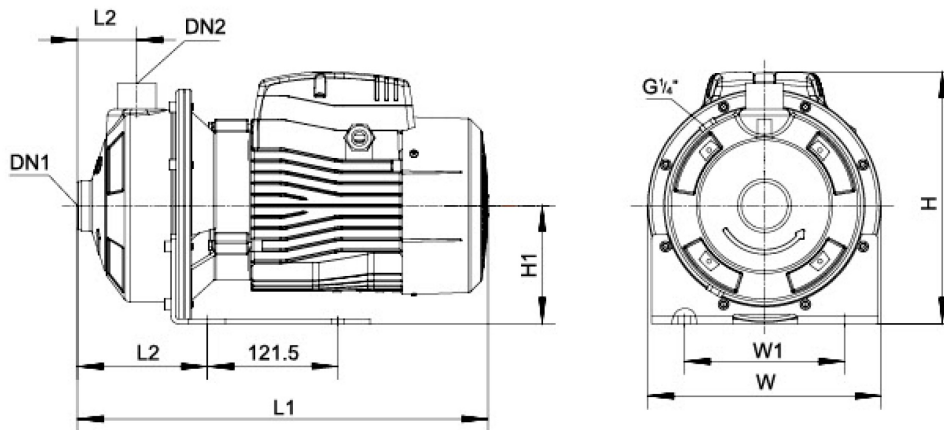
Technical Data

Model	Power		Q [m³/h]	0	7.2	8.4	9.6	10.8	12	15	18	21	24	26	29	31		
	kW	hp		Q [l/min]	0	120	140	160	180	200	250	300	350	400	430	480	520	
EMS 210/0.75	0.75	1	H [m]	16.8	15.6	15.2	14.8	14.2	13.6	11.9	9.8							
EMS 210/1.1	1.1	1.5		19.7	18.7	18.3	18	17.5	17.1	15.6	13.6							
EMS 210/1.5	1.5	2		24.2	23.5	23.2	22.8	22.4	21.8	20.2	18							
EMS 210/2.2	2.2	3		27.5	26.7	26.5	26.1	25.7	25.2	23.8	21.9							
EMS 370/1.1	1.1	1.5		15.4				14.7	14.4	13.5	12.3	10.8	8.9	7.6				
EMS 370/1.5	1.5	2		19.3					18.1	17.3	16.3	15	13.3	12.3	10.2			
EMS 370/2.2	2.2	3		23.1					21.7	20.9	20	18.8	17.2	16.2	14.2	12.3		

DIMENSIONS & WEIGHT

EMS 210, 370 - 50Hz

Dimensional Drawing



Dimensions

Model	DN1	DN2	L (mm)	W (mm)	H (mm)	L1 (mm)	L2 (mm)	W1 (mm)	H1 (mm)
EMS 210/0.75	1 1/2"	1 1/4"	392	210	234	129	55	149	110
EMS 210/1.1	1 1/2"	1 1/4"	392	210	234	129	55	149	110
EMS 210/1.5	1 1/2"	1 1/4"	440	210	250	129	55	149	110
EMS 210/2.2	1 1/2"	1 1/4"	440	210	250	129	55	149	110
EMS 370/1.1	1"	1 1/4"	392	210	234	129	55	149	110
EMS 370/1.5	1"	1 1/4"	440	210	250	129	55	149	110
EMS 370/2.2	1"	1 1/4"	440	210	250	129	55	149	110

Packing information

Model	G.W. (Kg)	L (mm)	W (mm)	H (mm)	Quantity (PCS/20'TEU)
EMS 210/0.75	14	410	240	270	1104
EMS 210/1.1	15	410	240	270	1104
EMS 210/1.5	18	465	240	270	968
EMS 210/2.2	20	465	240	270	968
EMS 370/1.1	15	410	240	270	1104
EMS 370/1.5	18	465	240	270	968
EMS 370/2.2	20	465	240	270	968

TECNODYNE

TECNODYNE PUMPS INC.

02 Sheppard Ave E, North York
Ontario, Canada M2N 5Y7
T: +1 (647) 255-2270
info@tecnodyne.ca
www.tecnodyne.ca

TECNODYNE (China) Ltd.

Suite C, Level 7, World Trust Tower
50 Stanley Street, Central
Hong Kong
hk@tecnodynepumps.com
www.tecnodynepumps.com